

# REPORTING 101

Crimestoppers Safe Schools Louisiana

REPORT

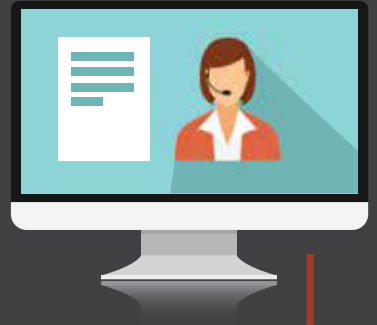


## HAVE A CONCERN? LET US KNOW. IT'S ANONYMOUS.

You can report any type of concern or situation by using the SS mobile app or by going to [www.safeschoolsla.com](http://www.safeschoolsla.com). You will set up your secure pin, ensuring your identity is unknown.

## WE'RE HERE 24/7 TO RESPOND TO YOUR REPORT.

A team of adults will respond to your report around the clock and will make sure to notify the appropriate authorities.



## YOU CAN CHAT WITH US IN REAL TIME.

Once you have submitted your report, you can engage in a live 2 way dialogue with the responder. You will also be notified when an action is taken on your report.

## WE'LL LOOK INTO THINGS.

Your report will go to a team of diverse experts, school principal, school counselor, or law enforcement, to investigate your concern or situation. This team of adults works together to make sure no stone is left unturned.



## WE'LL TAKE CARE OF THINGS.

The team of adults works together to disrupt behaviors or situations and get help to those who need it. The diversity of these experts ensures every report is handled properly and responsibly.

“SAU IT HERE”



**SAFE SCHOOLS LOUISIANA**

[www.safeschoolsla.com](http://www.safeschoolsla.com)

**CRIMESTOPPERS**



This project was supported by Grant No. 2019-YS-BX-0032 awarded by the Bureau of Justice Assistance to the Louisiana Commission on Law Enforcement (LCLE) for the STOP School Violence Grant Program. The Bureau of Justice Assistance is a component of the Department of Justice's Office of Justice Programs, which also include the Bureau of Justice Statistics, the National Institute of Justice, the Office of Juvenile Justice and delinquency Prevention the Office of victims of Crime and the SMART Office. Points of view or opinions in this document are those of the author and do not necessarily represent the official position or policies of the U.S. Department of Justice, Bureau of Justice Assistance or LCLE”.

